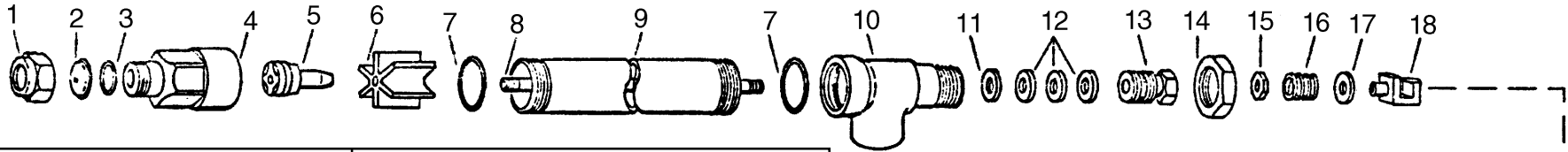
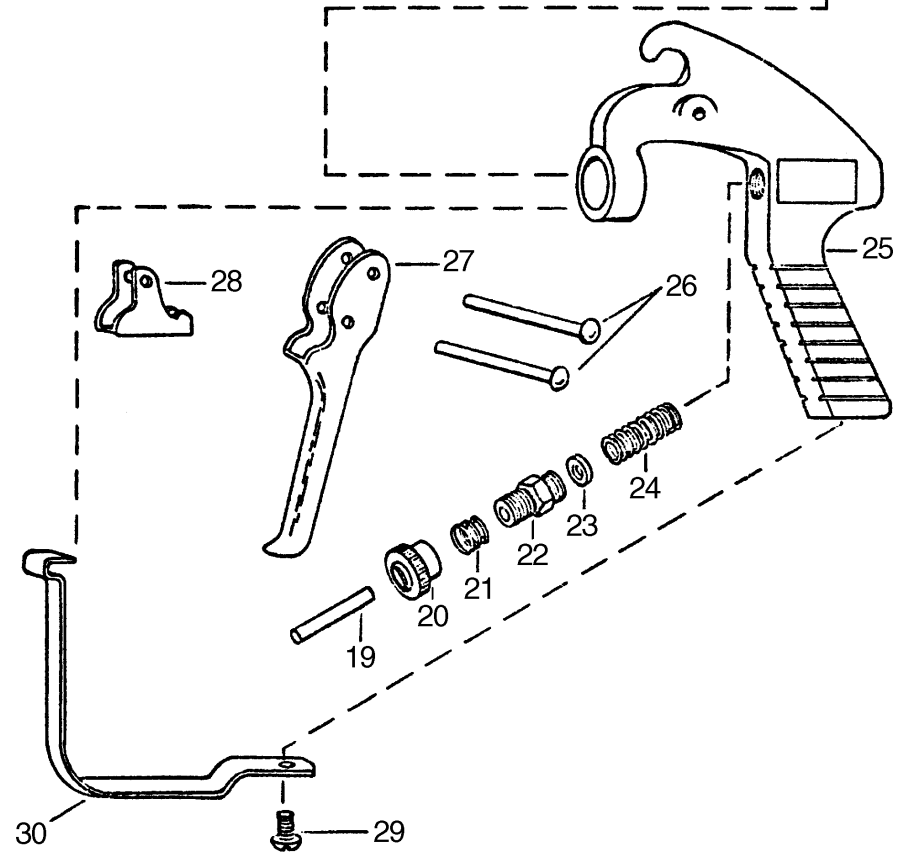


No. 43L & No. 43H GUNJETS (13" Extension)



Item	Part No.		Description
	Brass (#43-)	Aluminum (#43-AL)	
1	1325	1325-AL	Cap, Brass or Aluminum
2	D-**	D-**	Orifice disc, hardened stainless steel
*3	4743-NY	4743-NY	Gasket, nylon
4	10566	10566-AL	Nozzle housing, brass or aluminum
*5	10565	10565-AL	Seat plug, seat plate, washer & core subassy.
6	10571	10571-AL	Guide vane, brass or aluminum
7	6943-AL	6943-AL	Gasket, aluminum (2 Req'd)
8	19238-416SS	19238-416SS	Stem, type 416 stainless steel
9	6604	6604-AL	Tubing, brass or aluminum
10	6492	6492-AL	Inlet body, brass or aluminum
*11	6601-302SS	6601-302SS	Packing washer, type 302 stainless steel
*12	6602-LEA 6602-TEF	6602-LEA 6602-TEF	Packing, leather (3 Req'd) (Standard) Packing, teflon (3 Req'd) (Optional)
13	19237	19237-AL	Packing screw, brass or aluminum
14	6599	6599-IZP	Locknut, brass or steel-zinc plated
15	9641-INP	9641-INP	Stem nut, steel-nickel plated
16	6595-SS	6595-SS	Trigger stop spring, stainless steel
17	7991-IZP	7991-IZP	Washer, steel-zinc plated
18	6597-INP	6597-INP	Trigger guide, steel-nickel plated
19	6591-SS	6591-SS	Spring stud, stainless steel
20	6589-IZP	6589-IZP	Stop adj nut, steel-zinc plated
21	6594-SS	6594-SS	Spring for Stop adj nut, stainless steel
22	6588-IZP	6588-IZP	Spring screw, steel-zinc plated
23	6592-302SS	6592-302SS	Spring guide washer, type 302 stainless steel
24	6593-1-SS 6593-2-SS	6593-1-SS 6593-2-SS	Main spring, stainless steel (For #43L-) Main spring, stainless steel (For #43H-)
25	14477-1-AL	14477-1-AL	Handle body, aluminum
26	7623-IZP	7623-IZP	Rivet, steel-zinc plated (2 Req'd)
27	6509-INP	6509-INP	Trigger, steel-nickel plated
28	6510-INP	6510-INP	Trigger stop, steel-nickel plated
29	11757-INP	11757-INP	Screw, steel-nickel plated
30	13798-INP	13798-INP	Trigger Guard, steel-nickel plated
Gunjet No. 43L- Brass, complete, for pressures up to 200 PSI			
Gunjet No. 43L-AL- Aluminum, complete, for pressures up to 200 PSI			
Gunjet No. 43H- Brass, complete, for pressures from 200 to 800 PSI			
Gunjet No. 43H-AL- Aluminum, complete, for pressures from 200 to 800 PSI			
AB43-KIT Spare Parts Kit (Includes all items marked with *)			
AB43-AL-KIT Spare Parts Kit (Includes all items marked with *)			
ABCK43-KIT (Conversion kit for Adj. stem) - items 8, 13 & 15)			
ABCK43-AL-KIT (Conversion Kit for Adj. Stem) - Items 8, 13 & 15)			



**Specify Orifice Disk Size